

# 2017年全国保龄球锦标赛油型 ----- 短油



Oil Pattern Distance: **35 Feet**      Reverse Brush Drop: **31 Feet**      Oil Per Board: **50 uL**  
 Forward Oil Total: **12 mL**      Reverse Oil Total: **11.45 mL**      Volume Oil Total: **23.45 mL**  
 Forward Boards Crossed: **240 Boards**      Reverse Boards Crossed: **229 Boards**      Total Boards Crossed: **469 Boards**

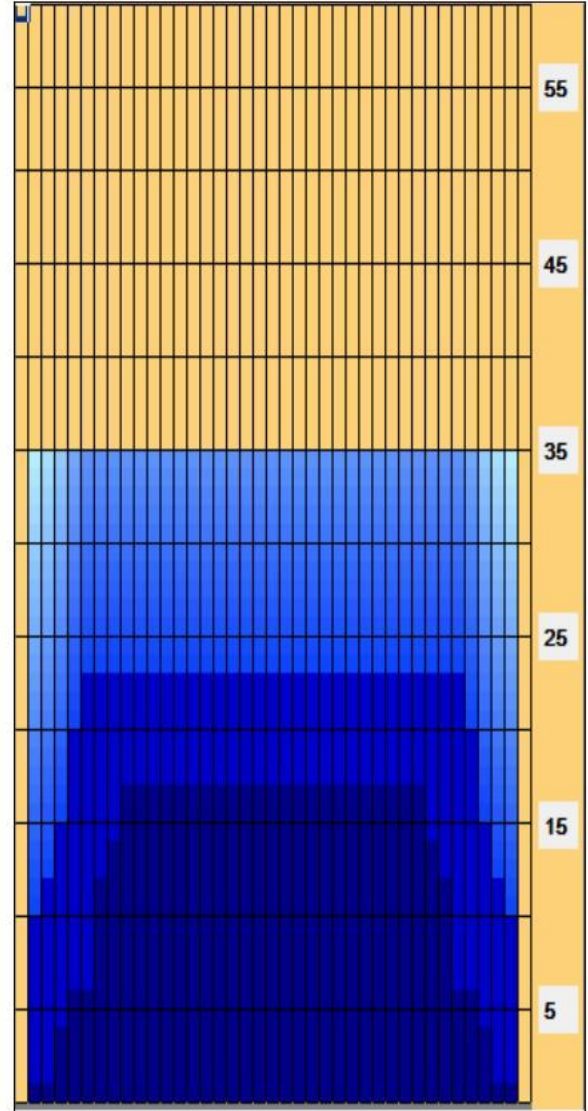
	Start	Stop	Loads	Speed	Crossed	Start	End	Feet	T.Oil
1	2L	2R	2	14	74	0.0	1.9	2.5	3700
2	4L	4R	1	18	33	1.9	4.4	2.5	1650
3	5L	5R	1	18	31	4.4	6.9	2.5	1550
4	7L	7R	2	18	54	6.9	12.0	5.1	2700
5	8L	8R	1	18	25	12.0	14.5	2.5	1250
6	9L	9R	1	18	23	14.5	17.0	2.5	1150
7	2L	2R	0	22	0	17.0	35.0	18.0	0

	Start	Stop	Loads	Speed	Crossed	Start	End	Feet	T.Oil
1	2L	2R	0	30	0	35.0	23.0	-12.0	0
2	6L	6R	1	18	29	23.0	20.5	-2.5	1450
3	5L	5R	2	18	62	20.5	15.4	-5.1	3100
4	4L	4R	2	14	66	15.4	11.5	-3.9	3300
5	3L	3R	1	14	35	11.5	9.6	-1.9	1750
6	2L	2R	1	14	37	9.6	7.7	-1.9	1850
7	2L	2R	0	14	0	7.7	0.0	-7.7	0

Conditioner:  
Type In or Select One

TransferType:  
Type In or Select One

- Forward
- Reverse
- Combined
- Buff



Item	3L-7L:18L-18R	8L-12L:18L-18R	13L-17L:18L-18R	18L-18R:17R-13R	18L-18R:12R-8R	18L-18R:7R-3R
Description	Outside Track:Middle	Middle Track:Middle	Inside Track:Middle	Middle:Inside Track	Middle:Middle Track	Middle:Outside Track
Track Zone Ratio	1.67	1.01	1	1	1.01	1.67

